

| Overview

Your First Day

On the first morning, after welcoming you to the school, we give you an Entry Test, followed by a tour of Bournemouth (preferred start dates only) and a Getting-to-Know-You session. In the afternoon, in the Induction Meeting, we explain how the school operates, how to live in England and give you your individual course timetable. You will also receive a Student Guide to Bournemouth and life in England.

Your Progress

Throughout the course, your teachers monitor your progress carefully and give you regular tests. You are always free to discuss your studies with your teachers or the Director of Studies.



Homework

Homework forms an important part of your course. The amount depends on the type of course you are following, but you should expect to do 1 to 2 hours a day.

Certificate of Studies

At the end of your course, you will receive a Certificate of Studies, subject to satisfactory attendance and performance. If requested, a monthly progress report can be sent to your sponsor.

NEWSBEEET

BEET publishes a monthly magazine called NEWSBEEET, to which all students are invited to contribute. The magazine is an interesting forum for expressing views of Britain, places you have visited, films you have seen etc. The magazine also contains recipes, poetry, articles about students' own countries, their customs, politics, arts etc.



| Course Structure

All courses follow a **Core Programme** of twenty lessons per week. You can then, if you like, choose one or two additional subjects from the **Options Programme**, to study a further 4 or 8 lessons per week.

Core Programmes:

- General English
- Cambridge Examination Preparation
- IELTS Preparation

Options Programmes:

- Speaking & Pronunciation Practice
- Reading Writing & Listening Skills
- IELTS Preparation
- Pre-Masters
- Business English
- English for Tourism Hotel & Hospitality
- English for Media
- Exam Preparation for Cambridge PET, FCE, CAE, CPE, BEC

Total Lessons	Monday-Friday	Tuesday-Friday	Evening
20	Core programme 20 lessons		Evening Programme available to all students
24	Core programme 20 lessons	+ 4 lessons on the Options Programme 1 subject	
28	Core programme 20 lessons	+ 8 lessons on the Options Programme 2 subjects	Normally 4 evenings per week

Please note: all lessons are 45 minutes long. Lessons on the Core Programme are combined to form 90-minute sessions with a 20-minute break in between.

Timetable

We normally operate an alternating "zig-zag" timetable. This means that one day the 20-lesson core programme is in the afternoon, and the following day in the morning. Lessons on the Options Programme remain at the same time each day, normally from 1220 to 1405. This system provides you with concentrated periods of free time, including a long weekend every other week, which makes it easier to organise your leisure time.



Interactive Whiteboards

All classrooms in the main school building are equipped with interactive whiteboards, using the latest Promethean Activinspire software.



Wireless Internet

Wireless internet is available throughout the main school building. Usually the signal can also be picked up outside the school 24 hours a day. Power points for laptops are available in the canteen. Please remember to bring an appropriate adaptor!

| 2 Computer Rooms

- 34 multi-media computers
- Free internet access all day (broadband connection)

All thirty-four computers are equipped with CD-ROM, headphones and microphones. There is a wide range of interactive CDs for both classroom use and self-study. Once a week, there is normally a time-tabled lesson in one of the rooms. Otherwise, they are open for general use. Both rooms are open from 0800.

The school has a shared drive called Students Shared. On this drive you can find information about the school, social activities, local entertainment, courses and exams as well as some self-study materials. You can also open documents put there for you by your teacher and save documents you have worked on yourself. You can access this drive from the computer rooms or anywhere in the school using wireless.

| Library & bookshop

- 1000-book collection
- DVDs, CDs & videos
- Librarian to advise and help

The library is available to all students and contains about 1000 volumes. Books are graded from near-beginner to advanced, with a good selection of books in the original version.

Many books come with CDs for use in the computer rooms or at home. If you wish to listen at home, CD-players are available on loan. The librarian can advise on what materials are best for your level.

You may also purchase books from the bookshop, discounted by at least 10%. Please note that coursebooks are included in the fees, and are yours to keep.



| Canteen

- Meals, snacks, drinks
- Power-points for laptop computers
- Newspapers, magazines
- Open all day
- Screen, sound & projection facilities

The canteen offers hot meals, snacks, sandwiches, hot and cold drinks, fruit and chocolate. It is school policy to keep meal prices as low as possible. Generally a hot meal will cost less than half the price of a meal elsewhere. Daily newspapers and magazines are provided. Wireless internet is available, together with power points for your laptop.



| Social & Leisure Programme

- Free evening lectures on British Culture
- Free evening activities, music, comedy theatre etc...
- Regular Saturday excursions with teachers and other staff as guides

BEEET offers a full and varied programme of evening activities, plus regular Saturday excursions. See pages 24 & 25.

| University Counselling Centre

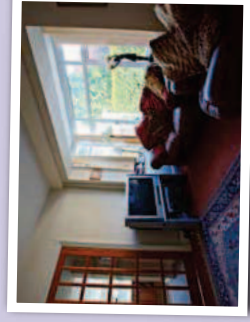
- Computerised course locator
- Computerised careers guidance
- Free placement service

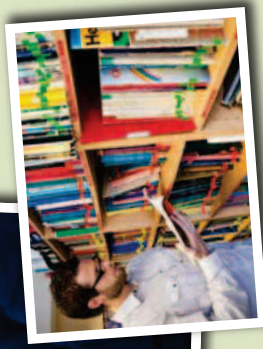
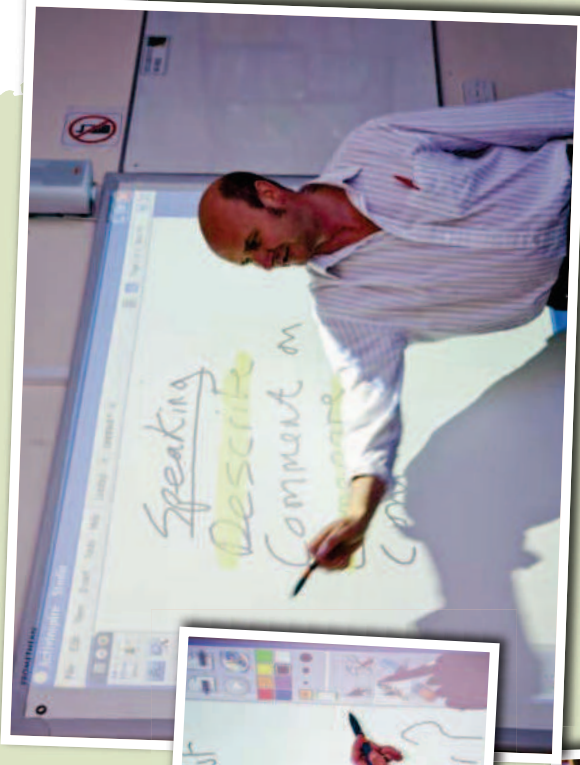
BEEET offers free career guidance, counselling and university placement services. We use the latest technology both to identify an appropriate career path and to locate a course suitable for your needs and abilities. See page 18.

| Accommodation

- Homestay or Private Home
- Student houses (self-catering)
- Executive homestay
- 24-hour emergency service

BEEET offers year-round accommodation, either in homestay or in self-catering student houses. Most accommodation is within easy walking distance of the school. See pages 20 to 22.





Overview

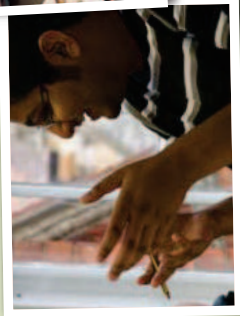
Core Programme – General English

The Core Programme is based on the four language skills: Speaking, Listening, Reading and Writing.

Emphasis is placed on encouraging your fluency and confidence in the language. Your teachers will employ the most efficient techniques to ensure you develop accurate grammar, vocabulary and pronunciation.

Some of your lessons will be in a computer room, where you can use computers with interactive software and broadband connection.

You will be in a multi-national class, placed with other students of the same level with the same high motivation. Our aim is to ensure you learn the maximum possible.



Options Programme

- Speaking & Pronunciation Practice
- Reading Writing & Listening Skills
- IELTS Preparation
- Pre-Masters
- Business English
- English for Tourism Hotel & Hospitality
- English for Media
- Exam Preparation for Cambridge PET, FCE, CAE, CPE, BEC

See pages 10 and 11.



A Varied Programme

Normally, you have two to four teachers each day, depending on which course you have chosen. This gives you the chance to experience a variety of approaches to the language. This variation is further expanded through use of audio, audio-visual equipment and computers.

You will learn real English, as it is used in the world outside the classroom. Our aim is to bring you as near to native competence as possible.

There are regular tests to monitor your progress in grammar, vocabulary and the four main skills of speaking, listening, reading and writing.

Teaching Materials

BEEET uses the latest coursebooks and materials. In fact, as our Principal is one of the world's leading coursebook writers, you might even find yourself using a book that no other school yet possesses.

General English

Main Course (Code B):
Core Programme of General English only

Intensive Course (Code A)
Core Programme + one subject from the Options Programme

Extra Intensive Course (Code AA)
Core Programme + two subjects from the Options Programme

B, A, AA	Any Monday or Tuesday, when Monday is a public holiday	Course codes
20 lessons only, or 20 lessons +4 / +8 (Options Programme)	Elementary to Advanced	Course starts
Normal Maximum: 12 Average: 10.6 Minimum: 17 years Normal Range: 18-30 years		Lessons/week
		Level
		Class size
		Age

Total Lessons	Monday-Friday	Tuesday-Friday	Evening
20	General English 20 lessons		Evening Programme available to all students
24	General English 20 lessons	+4 lessons on the Options Programme 1 subject	Normally 4 evenings per week
28	General English 20 lessons	+8 lessons on the Options Programme 2 subjects	

Choose 1 option for 24-lesson (A) courses.
Choose 2 options for 28-lesson (AA) courses.
All options are subject to availability.

General English

- Speaking and Pronunciation Practice
- Reading, Writing and Listening Skills

Examination Preparation

- Cambridge, PET, FCE, CAE and CPE
- Business English Certificates

University Entrance

- IELTS Preparation
- Pre-Masters

Professional English

- Tourism, Hotel & Hospitality
- Business
- Media



General English

Speaking & Pronunciation Practice

Available: **All year**
Levels: **Elementary to Advanced**
Length: **Max. 8 wks per level**

The most popular component of this programme at all levels is concentrated work on the improvement and refinement of students' pronunciation. There is additionally a range of speaking activities designed to encourage fluency, naturalness and appropriacy. Discussions and simulations play a substantial role.

Reading, Writing & Listening Skills

Available: **All year**
Levels: **Elementary to Advanced**
Length: **Max. 8 wks per level**

This programme is based on weekly thematic modules, in which reading, writing and listening skills are given equal emphasis, along with their important sub-skills. At all levels every effort is made to provide stimulating subject matter and real-world tasks. There is a cultural slant towards British life and institutions.

The Options Programme is available to students studying 24 or 28 lessons per week-

Total Lessons	Monday-Friday	Tuesday-Friday	Evening
24	Core programme 20 lessons	+ 4 lessons on the Options Programme 1 subject	Evening Programme available to all students
28	Core programme 20 lessons	+ 8 lessons on the Options Programme 2 subjects	Normally 4 evenings per week

University Entrance

Pre-Masters

Available: **All year**
Levels: **Upper Intermediate to Advanced**

The course divides into two main areas: Academic Writing, which focuses on the vocabulary, grammar and writing skills needed to express ideas clearly in an appropriate academic style, and Study Skills, which looks at making presentations, taking notes, seminar skills, research, analytical thinking and writing assignments and dissertations.

We recommend you do this with IELTS Preparation.

IELTS Preparation

Available: **All year**
Levels: **Lower Intermediate to Advanced**

IELTS is now the standard requirement for entry into a British university.

The result of the examination is determined by a points scheme. You should confirm with your chosen university how many points they require. If you wish, BEET will consult the university for you.

For information about university counselling and placement, in addition to our computer-based career guidance programme, please see page 18.

There is also a full-time IELTS Preparation Course. See pages 16 and 17.

Professional English

Hotel & Hospitality

Available: **All year**
Levels: **Intermediate to Advanced**

A theme-based course for trainees and employees in the tourist and hotel industries. The course focuses on the language and professional skills required to perform effectively in all sectors of these industries. It is also essential preparation for students wishing to enter college or university to gain a formal qualification in general or specific branches of the profession.

English for Business

Available: **All year**
Levels: **Lower Intermediate to Advanced**

An intensive and practical programme, covering letter writing, telephone skills, conducting meetings, negotiating, note taking, information exchange and banking.

The course employs professional DVD's, Internet, modern textbooks and business magazines, relevant radio and television programmes and newspaper articles.

English for Media

Available: **All year**
Levels: **Intermediate to Advanced**

Designed for students intending to follow a career in media, or for people who simply have an interest in this fascinating area of modern life. Topics covered include television, radio, advertising, the music industry, films, newspapers, journals and the Internet.

Examination Preparation

Business English Certificates

Available: **April to June & September to November**
Levels: **Lower Intermediate (BEC Preliminary) Upper Intermediate (BEC Vantage) Advanced (BEC Higher)**

These examinations concentrate on practical business English. Subjects include marketing, production, financial services and general office work. The English studied covers a wide range of business requirements, and is intended for people who have some experience of business or are interested in entering this field. Candidates will be equipped with all the techniques required by the examinations and will be set one full mock exam, with feedback.

Cambridge FCE, CAE, CPE and PET*

Available: **January to March (FCE and CAE only) March to June September to December**

Extra examination preparation for the Cambridge First Certificate, Advanced English or Proficiency in English. For full-time courses leading to these examinations, please see pages ## and ##.

* The PET is placed about two-thirds of the way between beginner and Cambridge First Certificate level. There are three papers: Speaking, Listening, Reading and Writing. The preparation course gives practice in all of them, including one full mock examination.

