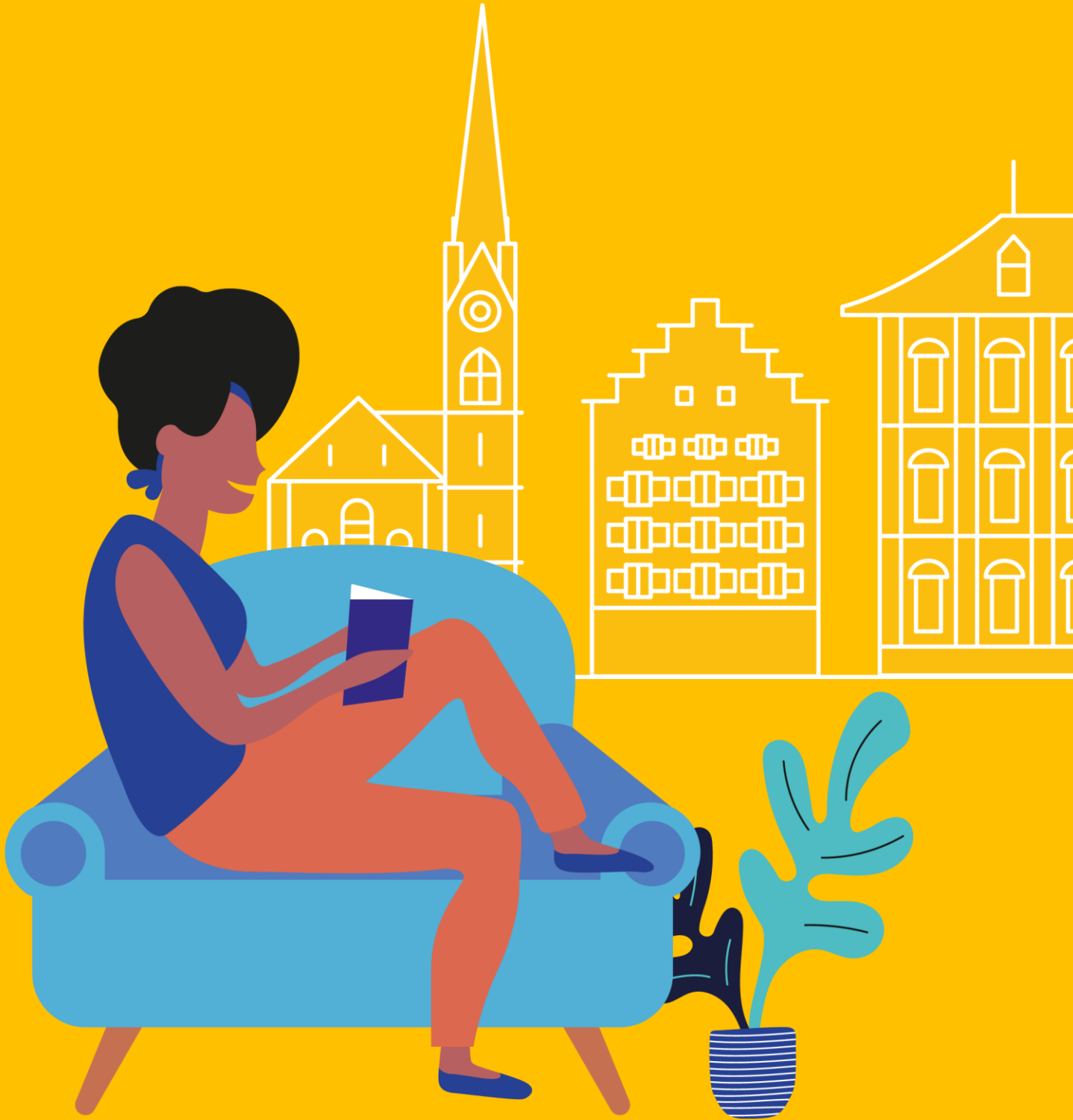


Accommodation Zurich, Switzerland 2022



Accommodation in Zurich

Accommodation placement fee: CHF125

Homestay

Our homestays are carefully selected and offer students the opportunity to learn more about the Swiss culture in a comfortable setting while studying German in Zurich.

- Welcoming and friendly atmosphere
- Carefully selected by our Accommodation Officers and visited on a regular basis
- Choice of single rooms (or twin rooms if two students book for the same time period) with B&B or HB
- Most host families will wash the student's laundry once a week for no additional cost or will suggest nearby laundry facilities
- All bed linen and towels provided
- Good and reliable transport links
- Internet access



Executive Homestay Option

Executive Homestays are often of a higher standard than other home stay accommodation. They are evaluated in terms of décor and some have a private bathroom (en-suite or sole use) and/or extra facilities such as a television in the bedroom.

Homestay Prices

Homestay Weekly Rates (per person per week)	Price
Single room, B&B	CHF 340
Single room, HB	CHF 430
Twin room, B&B*	CHF 265
Twin room, HB*	CHF 335
Supplemental Rates (per person per week)**	Price
Executive single/twin room	CHF 85/65
Extra night in a single room, B&B	CHF 50
Extra night in a single room, HB	CHF 60
Extra night in an executive single room, B&B	CHF 60
Extra night in an executive single room, HB	CHF 75

Key

B&B = Bed and Breakfast (Breakfast only, no kitchen access); HB = Half Board (Breakfast and evening meals)

* For students booking together with the same arrival and departure dates.

** Subject to availability. Please check with the school before booking flight tickets.

Residences

These options are more suitable for an independent student who is looking for a clean and basic accommodation at an affordable price. All students must be 18 or older, unless otherwise noted.

LSI Zurich can advise on residences and availability but students are required by the Swiss law to make bookings by themselves directly with the accommodation provider.

Josephine's Guesthouse for Women

Location: 5 minute walk to the city centre and 15 minutes by tram to LSI Zurich.

Rooms: Single rooms, single rooms with balconies, single rooms with queen-size beds, large single rooms with queen-size beds and twin rooms

Private Bathroom: Yes, en-suite

Meals: Breakfast in price included

Facilities: Wi-Fi, community kitchen, refrigerator, common living room, rooftop terrace, laundry facilities

Prices (per person per night when staying minimum 14 nights):

Single room: from CHF 70;

Single room with balcony: from CHF 75;

Single room with queen-size bed: from CHF 90;

Large single room with queen-size bed: from CHF 95;

Twin room: from CHF 110

Availability: Year-round

Other: Every two weeks housekeeping and bed linen and towels changed. Reception open during office hours and nightly security available.

Cancellation policy: Free cancellation 15 days before arrival. For cancellations less than 15 days before arrival 7 nights will be charged.



Maximilianeum 13

Location: 5 minute walk to the city centre and 10 minutes by tram to LSI Zurich.

Rooms: Single rooms with washbasins and single rooms with washbasin and balconies

Private Bathroom: No, shared on each floor

Meals: Self-catering; Breakfast and dinner from Monday to Friday can be included for an additional fee

Facilities: Wi-Fi, community kitchen, TV-room, study room, music room, laundry facilities

Prices (per person per night):

Single room with washbasin: from CHF 21;

Single room with washbasin and balcony: from CHF 27;

Availability: Year-round

Other: Monthly additional cost of CHF 50.00 for short stays. Bed linen provided at an extra cost of CHF 50. Final cleaning before departure charged for CHF 40.



Residences

Oldtown Hostel Otter

Location: Located in the heart of the old town and 10 minutes by foot to LSI Zurich.

Rooms: Double, Twin-bed and six-bed rooms

Private Bathroom: No, shared and only available when booking the twin room

Meals: Due to the current Pandemic no breakfast is offered at the hostel. There is free coffee and tea in the common room available 24 hours.

Facilities: Free Wi-Fi, bedsheets included, community kitchen

Prices (per person per night): Budget Double room: from CHF 45;

Twinroom with private bathroom: from CHF 50;

6-bed room: from CHF 37

Availability: Year-round

Other: Check in after 12:00h; check-out until 10:00h. Quiet-time after 22:00h in the dorms. No alcohol in the dorms. Free luggage storage on the day of departure.

Cancellation policy: A deposit fee of 25% the costs will be charged directly after booking. Cancellations 2 days before arrival will have no further costs deducted. Charges of 80% apply on cancellations for less than 1 day before arrival.



Jugendherberge – Zurich Youth Hostel

Location: Located near the lake Zurich and 25 minutes by train and bus to LSI Zurich.

Rooms: Single, double and quadruple rooms and six-bed rooms and dormitories

Private Bathroom: No, shared bathrooms except single rooms

Meals: Breakfast in price included

Facilities: Wi-Fi, kiosk, lounge area, TV, billiard, table tennis, air hockey, courtyard, bar, storing room for bicycles, seminar rooms, parking zones, laundry facilities

Prices (per person per night): Single room: from CHF 87;

Double room: from CHF 63;

Bed in a quadruple room: from CHF 54;

Bed in a six-bed room: from CHF 48;

Availability: Year-round

Other: Bed linen provided, towels only in double rooms provided otherwise available at the reception for an additional fee.



Hotels

LSI Zurich can advise on hotels and availability but students are required by the Swiss law to make bookings by themselves directly with the accommodation provider.

Hotel Seefeld ***

Location: Many of the city's sights and attractions are within walking distance. 10 minutes by tram to the city centre and 5 minute walk to LSI Zurich.

Rooms: Standard single rooms and twin rooms

Private Bathroom: Yes, en-suite

Meals: Breakfast in price included

Facilities: Free Wi-Fi, telephone, TV, radio, modem/fax connection, safe, mini bar, air conditioning, fitness centre, wellness facilities, terrace, parking zones

Prices (per person per night):

Single room: from CHF 225;

Twin room: from CHF 272;

Availability: Year-round

Other: Daily housekeeping, bed linens and towels provided and changed weekly



Hotel Adler ***

Location: Within walking distance to the main sights of the old town. 5 minute walk to the famous business centre "Bahnhofstrasse" and the lake. 10 minute by train to LSI Zurich.

Rooms: Single and double rooms and suites

Private Bathroom: Yes, en-suite

Meals: Breakfast in price included

Facilities: Free Wi-Fi, free city map, TV, telephone, safe, air conditioning, mini-bar, refrigerator, terrace, restaurant

Prices (per person per night): Single room: from CHF 130;

Double room: from CHF 170; Suite: from CHF 220

Availability: Year-round

Other: Daily housekeeping, bed linens and towels provided



Hotels

The Ibis Budget Zurich City West Hotel *

Location: 15 minutes by train to the Zurich airport and to the city centre. 25 minutes by train to LSI Zurich.

Rooms: Twin, double and triple rooms

Private Bathroom: Yes, en-suite

Meals: Self-catering; breakfast available at an extra cost

Facilities: Free Wi-Fi, TV, parking zones, vending machine, air conditioning, laundry facilities

Prices (per person per night): All rooms: from CHF 90

Availability: Year-round

Other: Daily housekeeping, linens and towels provided



Hotel Marta **

Location: Located in the old town near the main railway station. 11 minutes by tram to LSI Zurich.

Rooms: Small, medium rooms and large rooms and panorama rooms

Private Bathroom: Yes, en-suite

Meals: Breakfast in price included

Facilities: Free Wi-Fi, TV, ventilator, fitness centre, coffee bar, roof terrace, lounge room, laundry facilities

Prices (per person per night): Small room: from CHF 120; Medium room: from CHF 135; Large room: from CHF 155; Street room: from CHF 99; Panorama room: from CHF 205

Other: Housekeeping service available on demand

